

wave tabletop 1

WAVE-WTT-V01

Wave™ Tabletop displays are lightweight, highly-portable and come in straight or vertically curved options. The frame assembles with easy-to-use snap buttons, then simply pull the pillowcase fabric graphic over the frame and zip. Stretch fabric graphics are hand-sewn, durable and dry-cleanable.



features and benefits:

- State-of-the-art 30mm aluminum tube frame with snap button assembly
- Fits on a 6ft wide table
- Easy to store and ship
- Quick to assemble
- Kit includes: one frame, one dye-sublimated zipper pillowcase graphic, and one wheeled molded MCC storage case
- Lifetime hardware warranty against manufacturer defects

dimensions:

Hardware	Graphic
Assembled unit: 62"w x 45.36"h x 15.73"d 1575mm(w) x 1152mm(h) x 399.5mm(d) Approximate weight: 17 lbs / 7.7 kg	Total visual area: 62"w x 45.5"h 1575mm(w) x 1156mm(h) Please be sure to include a 2" bleed around the perimeter. Refer to related graphic template for more information.
Shipping	
Shipping dimensions: 1 MCC case: 34"l x 15"w x 7"h 864mm(l) x 381mm(w) x 178mm(h) Approximate shipping weight (with case): 25 lbs / 11.3 kg	

additional information:

Graphic material:
dye-sublimated zipper pillowcase fabric

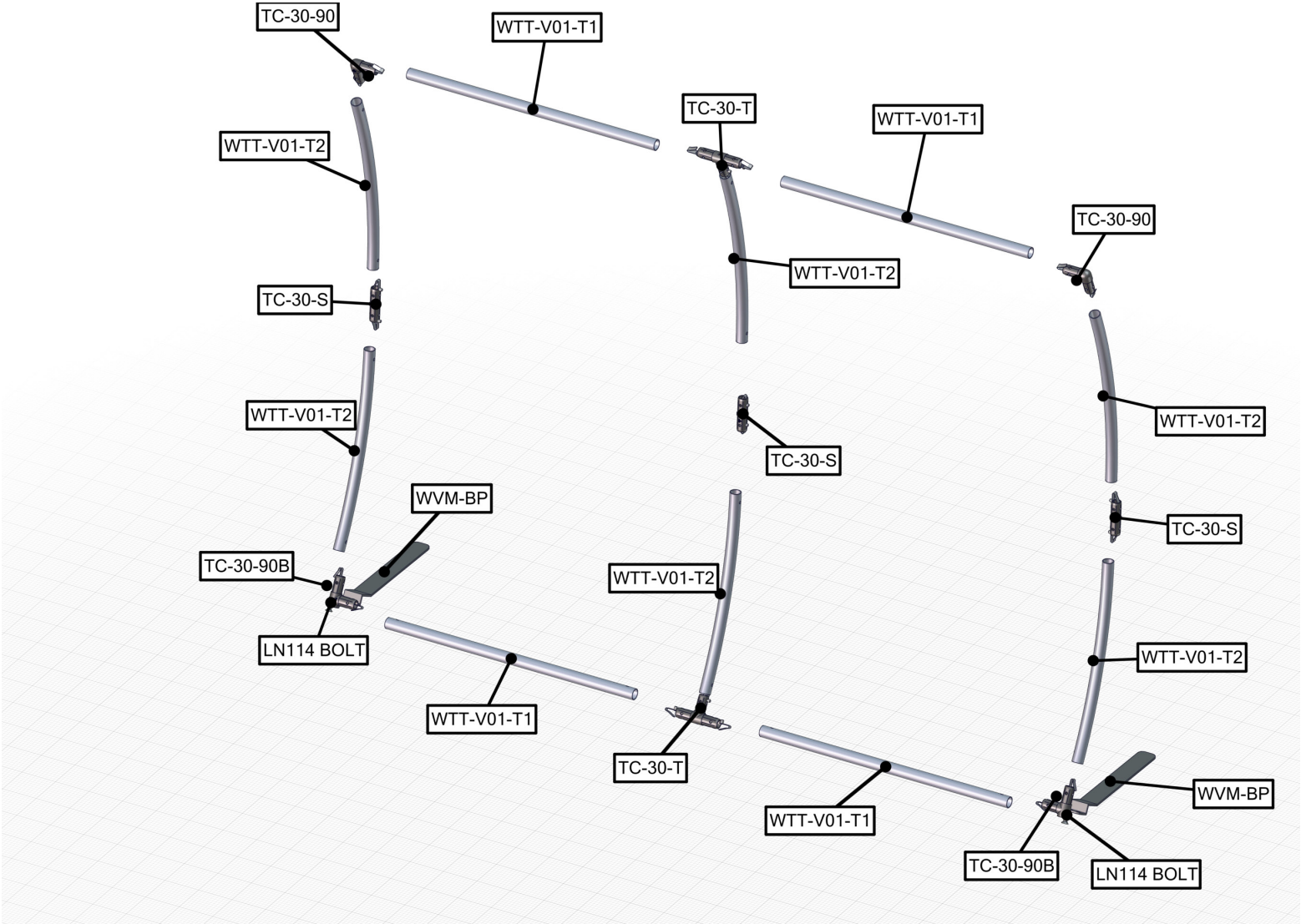


www.display-setup-animations.com

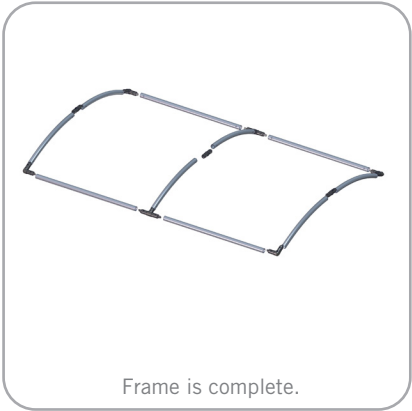
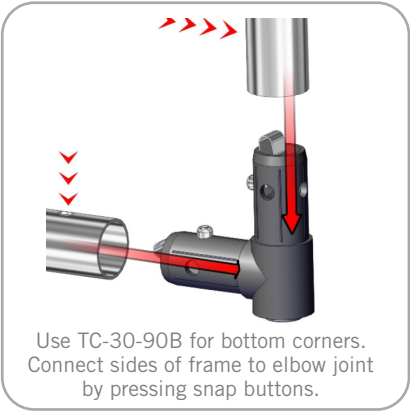
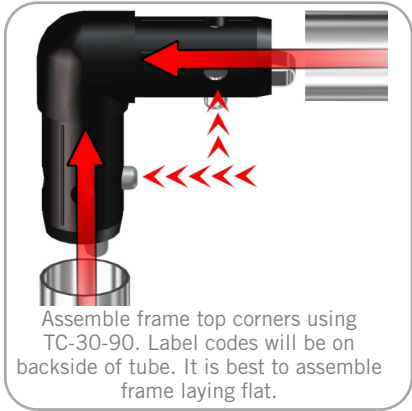
nimlok

wave

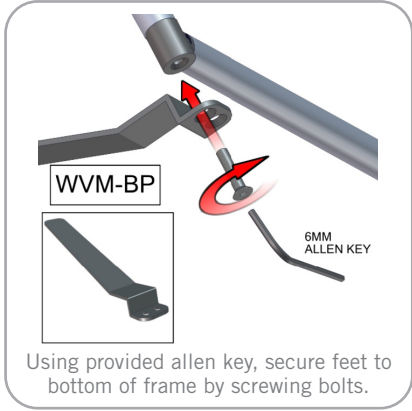
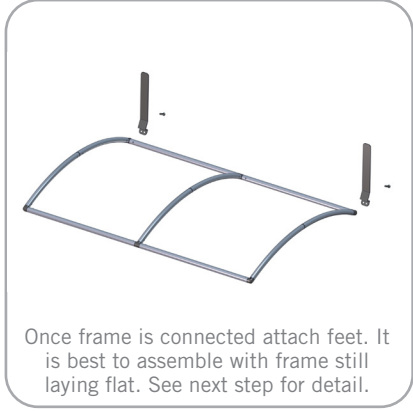
Parts Included		
Part Label	Qty	Part Code
LN114 BOLT	x2	LN114 BOLT
90 DEGREE ELBOW JOINT FOR 30MM TUBING WITH INSERT FOR BASEPLATE	x2	TC-30-90B
90 DEGREE ELBOW JOINT FOR 30MM TUBING	x2	TC-30-90
INLINE CONNECTOR FOR 30MM TUBING	x3	TC-30-S
T JUNCTION FOR 30MM TUBING	x2	TC-30-T
30MM STRAIGHT TUBE (738MM)	x4	WTT-V01-T1
30MM CURVED TUBE (R1210MM X 550MM)	x6	WTT-V01-T2
STEEL PLATE FOR WVC	x2	WVM-BP
TABLETOP FABRIC GRAPHIC	x1	WTT-V01-G



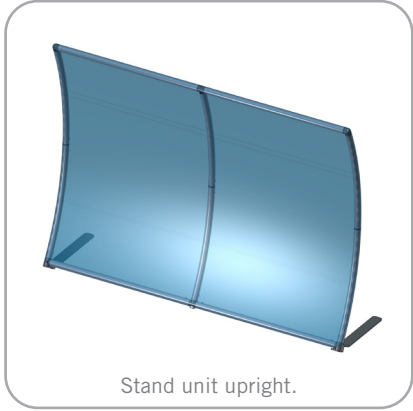
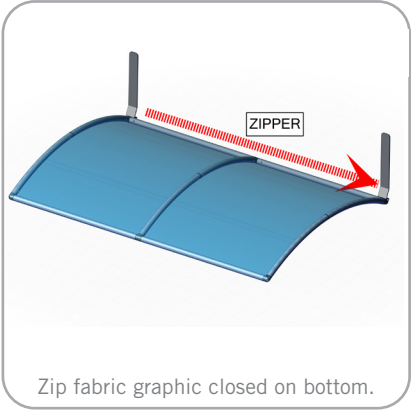
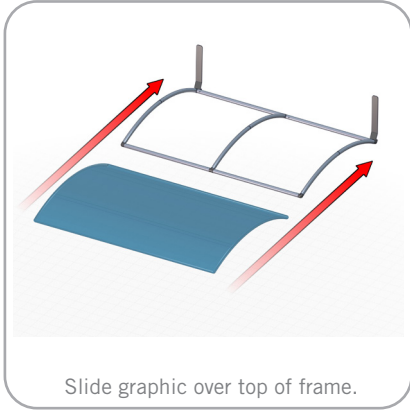
STEP 1: ASSEMBLE FRAME



STEP 2: ATTACH FEET



STEP 3: ATTACH GRAPHIC





wave TT1



wave TT2



wave TT3



wave TT4



wave TT5

Redesign of this exhibit without approval by Nimlok may result in dangerous and unsafe structures. Nimlok disclaims any responsibility for redesigned exhibits it does not approve in writing. Parts and components such as panels and extrusions are manufactured to metric sizing.

We continue to improve and modify our product range and reserve the right to vary the specifications without prior notice. All dimensions and weights quoted are approximate and we accept no responsibility for variance. E&OE. See Graphic Templates for graphic bleed specifications.